



**GREEN ENERGY**  
INTERNATIONAL LIMITED



**Corporate Profile**

## Table of Contents

Who we are	02
Our Vision:Our Mission:Core values:	03
Our People	04
GEIL project development and execution assurance process (PDEAP)	05
PDEAP across the stages	06
Exploration & Production	07
Otakikpo Incredible Operational Excellence	08
GEIL Otakikpo Pigging Success Story	09
At GreenEnergy	10
World-Class HSE Performance	11
The First Modular LPG Extraction Plant in Nigeria	12
Our objective to deliver reliable and affordable energy	13
Onshore terminal:A national Infrastructure	14
Safely Developing And Delivering Reliable Energy Solutions For Society	17
2023/2024 Projections	



# Who we are

**Green Energy International (GEIL)** is a Nigerian company that engages in the exploration and production of oil and gas. The oil division focuses on production and development opportunities in Nigeria, while the gas division creates a domestic market based Small Scale Gas Utilization opportunities and moving towards achieving zero gas flare model.

GEIL is the first indigenous company to begin construction of a world class Onshore Terminal with a 750K barrels Crude oil capacity; thereby positioning Otakikpo field a crude processing and export hub by providing access to evacuation export infrastructure for several stranded fields in the Eastern Niger Delta area.

The company generates maximum revenue with its exploration asset in OML 11, located Rivers State, Nigeria.



*Green Energy has been strategically positioned to achieve a sustainable competitive advantage through the delivery of affordable and reliable energy solutions*

**Our Vision:**

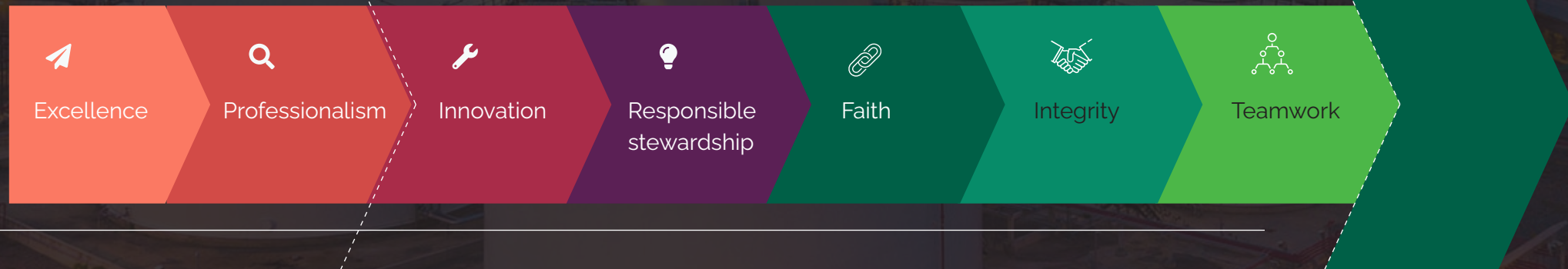
To be an integrated energy company that is committed to optimal utilization of hydrocarbon resources for the benefit of the nation and local communities.

**Our Mission:**

To be an elite Company that delivers affordable and sustainable energy through a powerful combination of capital stewardship, best-in-class project execution and operational excellence.



**Core values:**

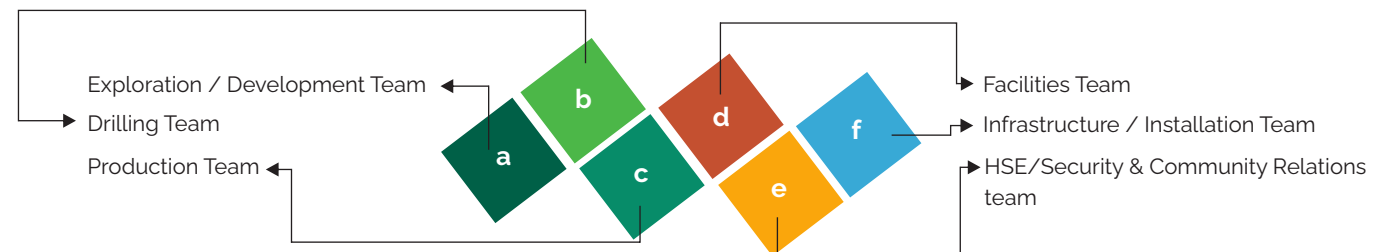


# Our People

Green Energy is fully a Nigerian company with a dynamic workforce of outstanding talents and seasoned professionals in the Oil & Gas industries; whose knowledge and passion for excellence are backed by cutting edge technology, integrity and excellent innovative skills that we like to refer to as our **strength**. This is in line with our mission to recruit, retain and reward a high-performance workforce. Its strong Nigerian profile gives the company an advantage in community acceptability and the enjoyment of favorable regulatory incentives. The company has engaged over **95%** direct employees who are all Nigerians, with a significant portion of employees, at all levels, drawn from its host communities and the Niger-delta. Our staff who cut across a wide spectrum of professional backgrounds, are the bedrock of our successful operations

This hardworking, virile and dynamic workforce of talented group of undaunted, courageous, world-class, and record-setting employee that is managed by a group of highly competent management team with tones of experience in the sector, giving our company an edge over others in terms of productivity and service delivery to our stakeholders. **GEIL** creates an environment that supports professionalism, integrity and innovation has led to higher performance team.

Our teams of experts include:



# GEIL PROJECT DEVELOPMENT AND EXECUTION ASSURANCE PROCESS (PDEAP)

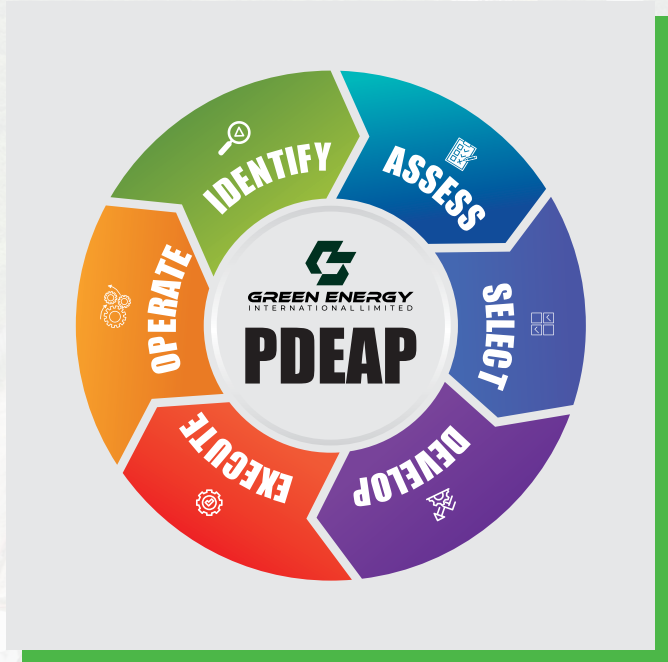


*( DELIVERING EXCEPTIONAL STAKEHOLDERS' VALUES VIA A  
BESPOKE DECISION BASED PROJECT MANAGEMENT STRATEGY)*

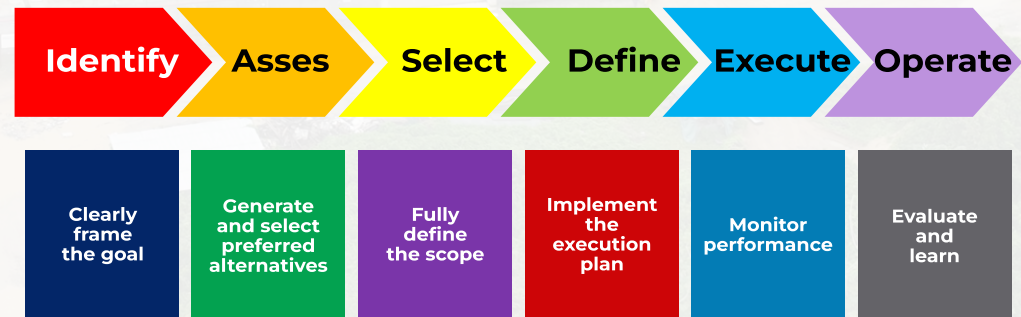
# PDEAP ACROSS THE STAGES

We designed and implemented a bespoke decision-based project management strategy; the GEIL Project Development and Execution Assurance Process (PDEAP). This cross functional process is designed to firmly establish a culture where quality conversations that drive phase-specific decisions are held at appropriate stages.

The PDEAP provides the core work process that encourages multi-functional teams collaborations that generates well-thought-out development plans.



- The PDEAP covers both decision making (early stages) and execution (later stages)
- Circle of the 11PDEAP" represents the continuous nature of the process.



We have also developed very aggressive plans to considerably increase production from the field with the potential to spend up to 750 million US\$ within 3 years



# Exploration & Production

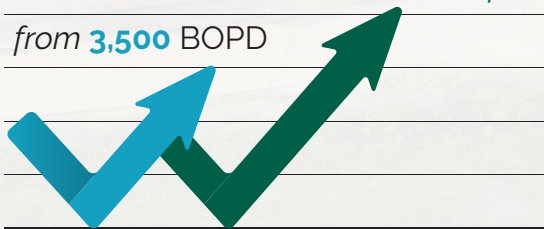


**Green Energy International limited** conducts exploration, appraisal, field development and production of onshore fields for the furtherance of national prosperity.

We are experts at building unstoppable team; Foresee the future and innovate to meet its demands; create strategic partnerships and alliances through all phases of our corporate growth.

We earn the trust and respect of all our stakeholders by acting with integrity and operating with the highest ethical standards.

In 2022, we ramped up production  
from **3,500** BOPD to **10,000** BOPD

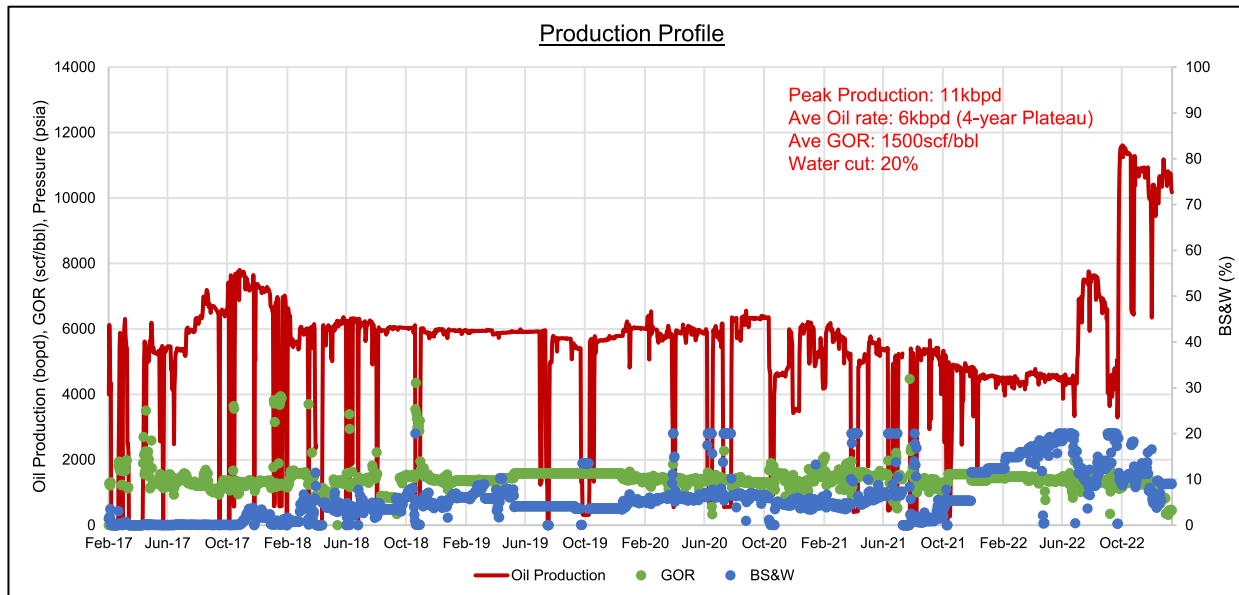


with portfolio of assets is at varying stages of our upstream operations – exploration, development and production.

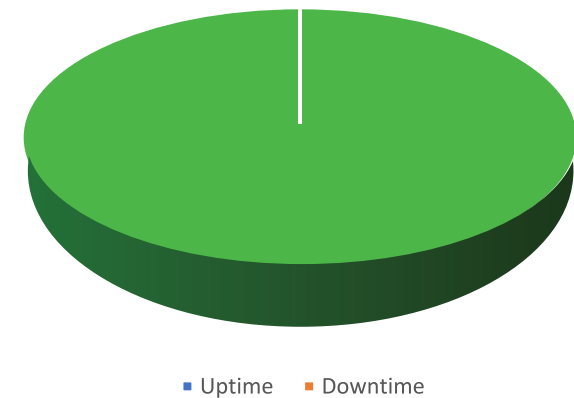




# Otakikpo Incredible Operational Excellence



2022 Production Uptime Analysis



Maintained 100% production uptime amidst several concurrent operations including drilling and commissioning of new wells pigging operations, etc

Improved storage and evacuation optimization towards adverse weather season which normally mandated downtime in the past

# GEIL Otakikpo Pigging Success Story

GEIL is the first indigenous operator to successfully plan and execute an offshore pigging operation in the Niger Delta region of Nigeria.

GEIL reason and drive to embark on the high-risk herculean operation:

Otakikpo field crude properties oWaxy crude Low pour point

Company relies on the export pipeline as sole means of crude evacuation

Evacuation pumps rates decline overtime from c.20kbpd to 14kbpd leading to frequent tank top issues

Statutory requirement to pig crude handling pipeline within 5-year period of operation as per "The Petroleum Act MOSR 199711



# At GreenEnergy

our Corporate and Social Responsibility strategies are focuses on:

The strategy aligns with our business objectives to safely develop and deliver affordable and reliable energy that is necessary for social and economic progress.

*In pursuing our legitimate business opportunities, Green Energy International Ltd maintains its commitment to comply with all applicable legal rules and regulations as well as international best practice principles.*

.....Prof. Anthony Olusegun Adegbulugbe



# World-Class HSE Performance



Our operations is always on the bases of an established core belief which is; safety is not the absence of incidents, but rather a presence of barriers.

We achieved an exceptional safety milestone – 6 million manhours without Lost Time Incident (LTI) since commencement of operation in the field.

ACHIEVED 6MMH(LTI)





# The First Modular LPG Extraction Plant in Nigeria

Eliminating associated gas flares in Nigerian stranded oil fields the otakikpo field innovative strategy



# Our objective to deliver **reliable** and **affordable** energy

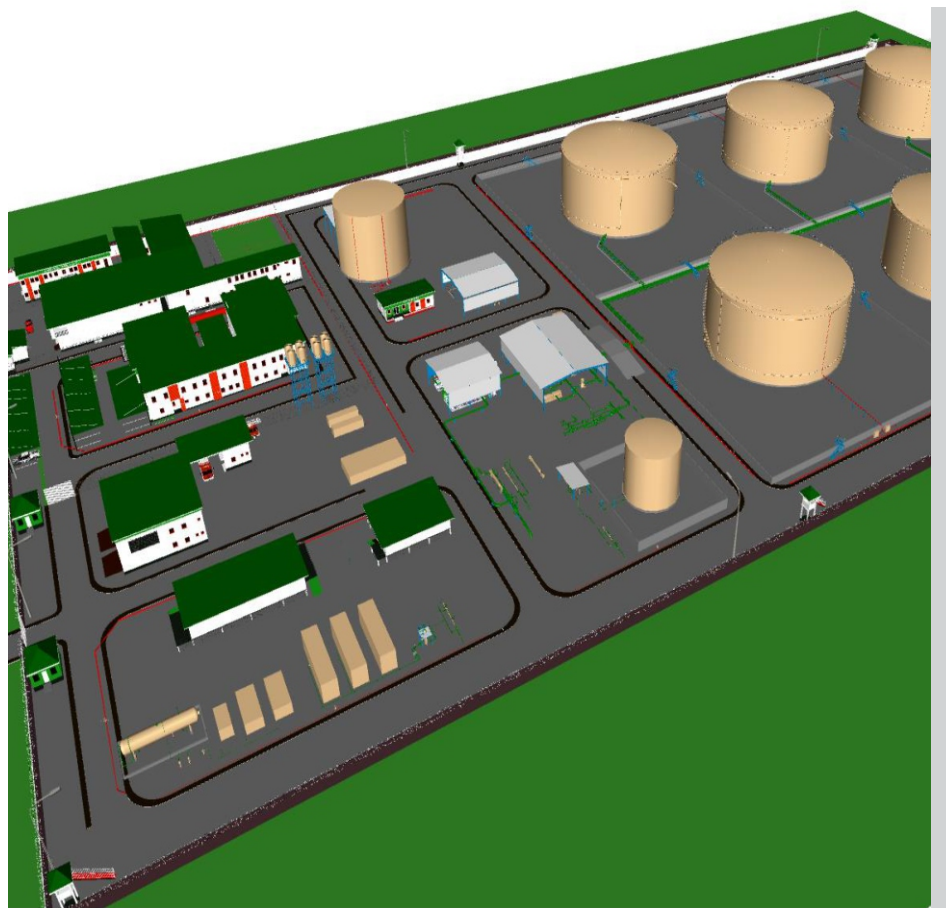
Green Energy underscored a golden achievement following the commissioning of the **12MMSCFD modular LPG** extraction plant and **6MW** power generating plants, making it as the first to be installed in the country; an achievement that demonstrates we are undaunted by hitherto serial number 1 exploits.

*bringing the plant to the gas.*

to the world without jeopardizing environmental and social excellence makes us prioritize the implementation and development of associated gas reserves in parallel with the oil reserves."Completing the **6MW** draws GEIL one step closer to honouring its commitments to the federal government to utilize gas for urbanization by establishing that the conventional approach of piping gas from a remote field needs to be replaced with a less orthodox technique of "bringing the plant to the gas".

Furthermore, we concluded that a modular, scalable option with a small footprint plant that is quick to deploy and easy to relocate is the most preferred Associated Gas utilization solution for stranded and small fields.





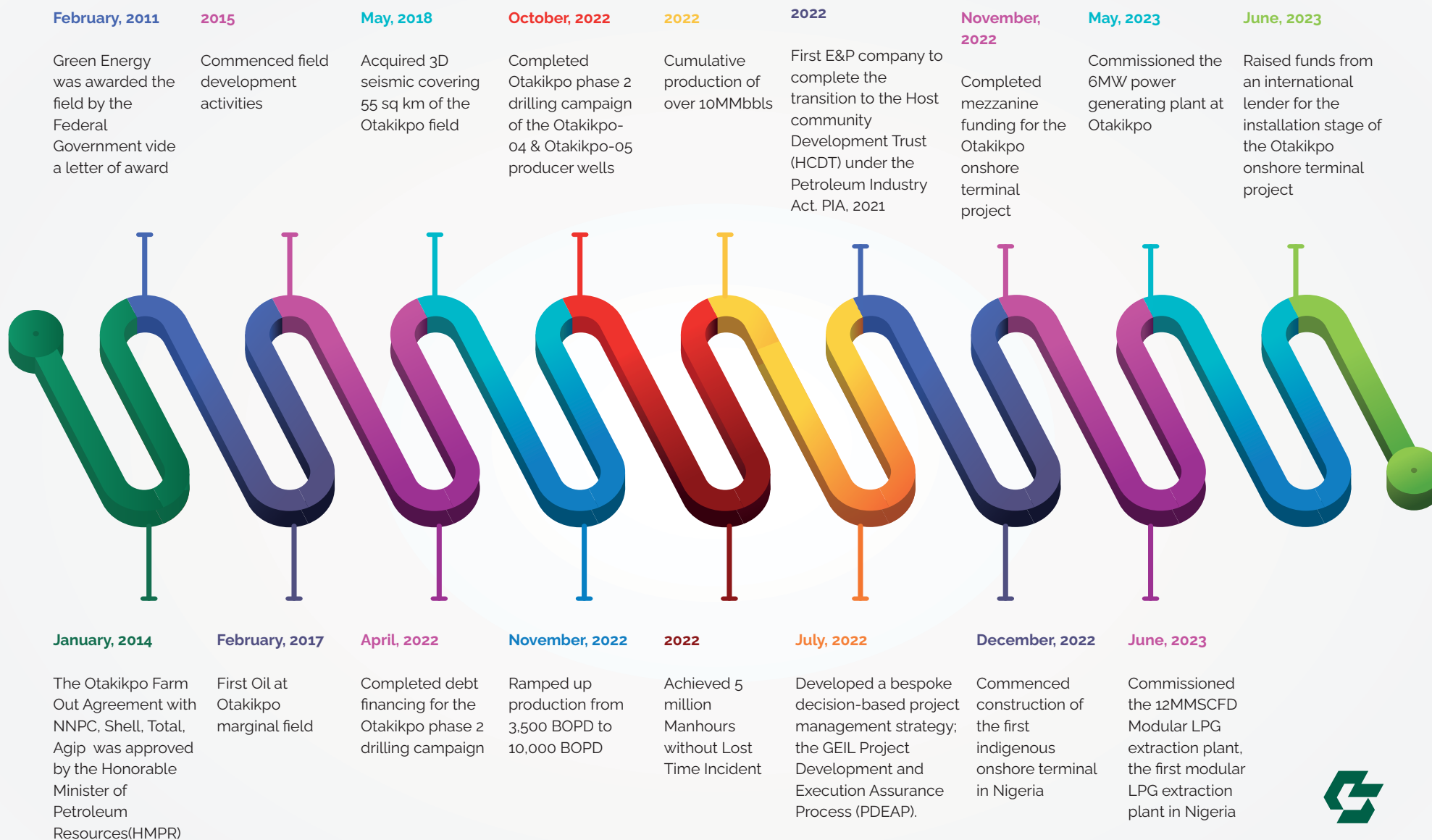
As such, we believe it is a key enabler for our Country's development and energy security. It will be the first new onshore terminal in Nigeria in **over 50 years**, and first to be non-IOC owned and operated.

## ONSHORE TERMINAL: A NATIONAL INFRASTRUCTURE

The development of the onshore terminal and export infrastructure is in line with our corporate strategy of developing and installing an efficient evacuation/export system at Otakikpo thus reducing overall OPEX \$/bbl.

We also plan to make the Otakikpo field a crude processing and export hub with a capacity of **750,000** barrels crude oil terminal by providing access to fit-for-purpose evacuation & export infrastructure for the several stranded fields in the Eastern Niger Delta area. There are **over 20 stranded fields** in close proximity to the terminal that will benefit from the enhanced access to readily accessible and cost-effective route to the market. The proposed onshore terminal is conceptualized as a national infrastructure with potential to unlock significant stranded reserves.







**OPERATOR OF OTAKIKPO MARGINAL FIELD OML 11**




- 4 dual completion Wells onstream
- production 11000 bbls per day
- 56 MMbbls proven resource
- 10,000 bpd production facility
- 150,000 storage capacity
- Drilling of 7 more wells
- 6" x 8km export pipeline
- production 25,000 bbls per day

CRUDE OIL PRODUCTION

- Installation of 20kbpd BPD to upgrade overall production system to 30kbpd.
- Installation of 5kbpd Produced Water System
- 750kbbls Onshore Terminal
- 20inch x 23km Onshore Terminal Offshore Export Pipeline System
- 14MW Installed Power Plant at Terminal and Flowstation.
- 8inch x 2.4km PEPF to Terminal Crude Evacuation Pipeline System.
- 4inch x 2km CPF to Terminal Fuel Gas Pipeline System.
- 4inch x 2km Terminal to Flowstation Produced Water Return Line.
- Produced Water Treatment and Injection Sytem.

GAS PRODUCTION & UTILIZATION

- 12 MMSCFD gas processing plant Power Generation
- 6 MW embedded power generation LPG Extraction
- Daily LPG production
- LPG bottling plant
- Industrial Park



*Thank  
You*





greenenergyint

### **Headquarters**

---

8, Richard Clapperton Street,  
Off Mamman Nasir Street,  
Asokoro, Abuja,  
Nigeria

### **Lagos Liason Office**

Block D1, Flat 415,  
1004 Housing Apartment,  
Victoria Island,  
Lagos State, Nigeria

### **Port Harcourt Office**

---

10B, Odili close, Birabi Street,  
GRA Phase 2, Port Harcourt,  
Rivers State, Nigeria

### **Operational Base**

---

FLBC, Ikuru Town,  
Andoni Local Government,  
Port Harcourt,  
Rivers State, Nigeria

+234-09-2914307  
+234-01-2272383  
info@greenenergy.ng  
www.greenenergy.ng

